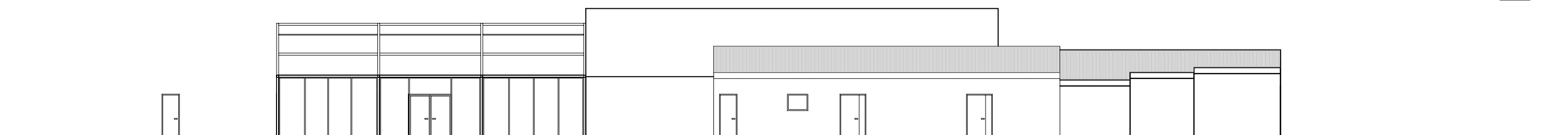
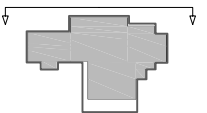
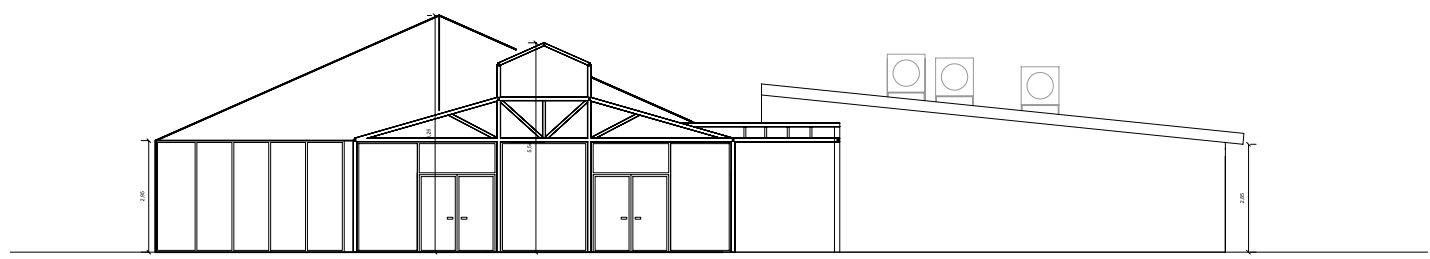
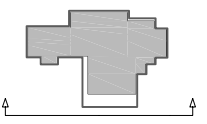


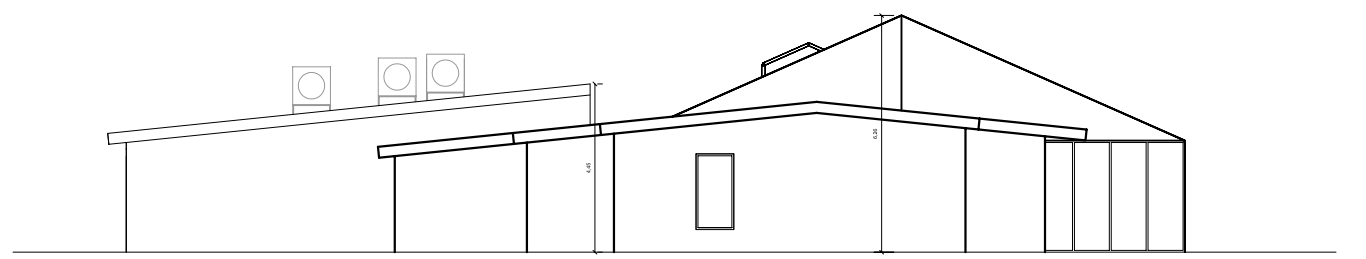
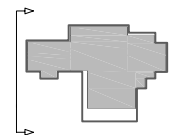
ALZADO NORTE



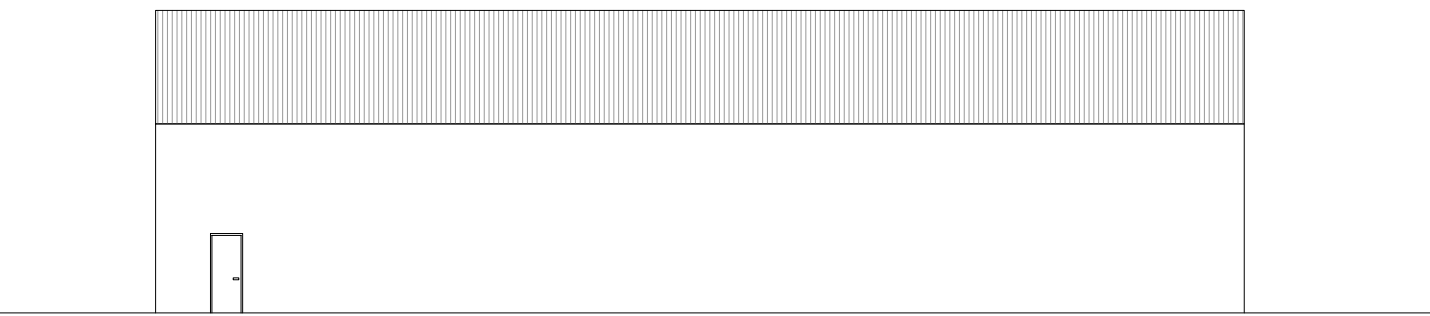
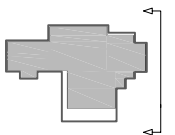
ALZADO SUR



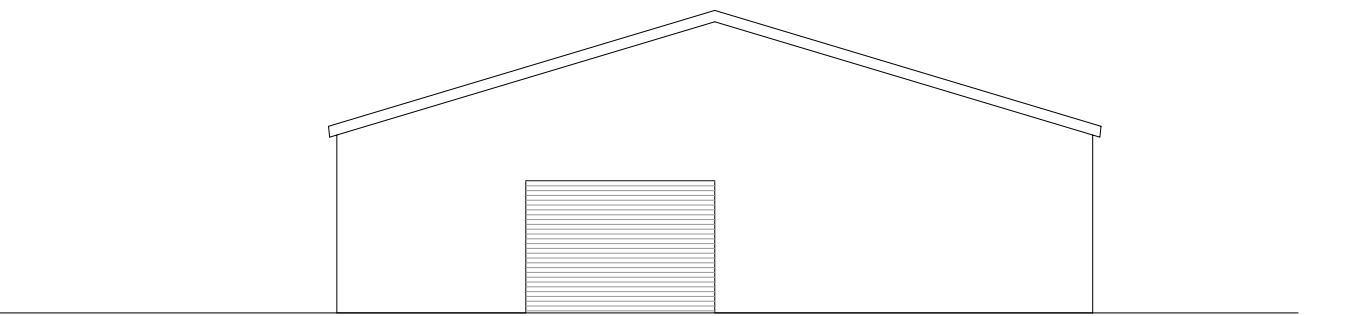
ALZADO OESTE



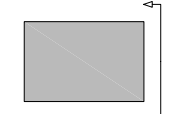
ALZADO ESTE



ALZADO NORTE EDIFICIO AUXILIAR



ALZADO ESTE EDIFICIO AUXILIAR



AMPLIACIÓN DE AUTORIZACIÓN DE USO EXCEPCIONAL EN SUELO RÚSTICO

PARA COMPLEJO EDUCATIVO, CULTURAL Y DE OCIO
EN PARCELA 5026 DEL POL. 1 DE LA CISTÉRNIGA (VALLADOLID)

05

ALZADOS

Escala: 1/200
JUNIO 2019

Promotor
SANZ RAMOS GESTIÓN S.L.